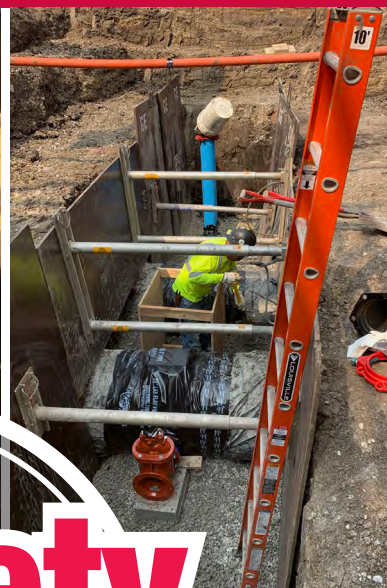


ON TRACK

FALL 2020

IN THIS ISSUE

Think Safety	1
Below Grade Conflicts	2
Keeping The Machine Running. 2	
GE Pipeline News	3
Fuel Systems	3
GE Selfie	4
Makeover In Progress	4



THINK safety

THINK SAFETY FIRST is located prominently on every General Excavating truck to serve as a visual reminder to our employees and trade partners that working safely is a core value and integral part of everything we do. Construction is a high hazard industry and construction workers engage in many activities

that may expose them to possible risks. General Excavating utilizes several resources and safety professionals to assist our employees and others on and off the construction sites to identify and eliminate construction-related hazards.

To this end, General Excavating prequalifies through several entities who provide manage-

ment compliance services to ensure the clients they serve have a reliable pool of well-trained, low-risk, financially strong, and qualified contractors. For example, **ISNetworld, Avetta, GRMS, Veriforce, and ConstructSecure Inc.** are companies General Excavating works with and through to become prequalified to work on manufacturing sites, railroads, data centers, and other project sites. These firms collect safety, quality, procurement, and regulatory data to help owner clients evaluate the best possible contractors/suppliers.

Think safety first is a driving force as we work to build the necessary knowledge, training, and experience needed to perform our jobs safely and correctly.

DID YOU KNOW
General Excavating's EMR is...

0.78

The Experience Modification Rating (EMR) is the construction industry's standard for measuring a company's safety performance and is used to gauge the severity of a company's accidents and injuries. The average EMR for the construction industry is 1.0 and anything lower than one is considered above average.





BELOW GRADE CONFLICTS

- WHO:** GENERAL EXCAVATING
- WHAT:** LOCATING EXISTING UNDERGROUND UTILITIES
- WHERE:** DOWNTOWN OMAHA, NEBRASKA
- WHEN:** PRIOR TO THE INSTALLATION OF NEW HYDRONIC PIPING
- WHY:** 100-YEAR OLD BRICK 144-INCH COMBINED SEWER IN THE CONSTRUCTION PATH
- HOW:** HYDRO EXCAVATION (HIGH PRESSURE WATER AND VAC)
- NEXT:** CALL STEVE CROSBY AT (402) 467-1627 (TO BEGIN FINDING YOUR PROJECT UNKNOWN)

KEEPING... The Machine Running

BEHIND THE SCENES, these men work exceptionally hard to keep the machine running and that is no easy task when the "machine" includes over 1000 pieces of equipment. Track excavators, rubber tire backhoes, directional boring rigs, hydro vac trucks, dump trucks, equipment trailers, pickups, concrete saws, and on and on... General Excavating's team of mechanics have a diverse background which allows them to keep the fleet moving at all times. Processing plants in Fremont, new hydrants at Offutt Air Force Base, site utilities on a new Omaha Henry Doorly Zoo display, Underground Residential Distribution installation... if the equipment is there, our mechanics are there. A well-maintained fleet eliminates downtime, minimizes project delays, and is an essential part of keeping the construction crews moving. *THANKS fellas!*

Pictured left to right: Hayden Holechek, Zach Auch, Jake Morrow, Dan Nelson



General Excavating directional bored approximately 190' of 4" sewer lines through the Centennial Public School's parking lot and building to replace an existing pipe for a bathroom remodel. Shout out to Bryan Vacha, Kyle Keller, and Sean Holden for a job well done!

#GeneralExcavating #GE #Construction

GE Shoutout



General Excavating
403 followers
1mo • @
Nebraska Innovation Campus continues to grow and General Excavating is happy to be part of the team **McCarthy Building Companies, Inc.** has assembled to con ...see more



McCarthy starts construction on hotel in Lincoln's Nebraska Innovation Campus
rejournal.com • 1 min read

Students may be home relaxing, but General Excavating is working hard on UNL's City Campus **The Lutheran Center (UNL)** with **Cheever Construction**. GE is installing underground utilities as the Lutheran Center renovates and expands. #GeneralExcavating #GE #Construction #UNL



GE General Excavating



FUEL SYSTEMS ...at U-STOP CONVENIENCE SHOP

GENERAL EXCAVATING and **Midwest Petroleum Equipment** have been working together and installing fuel tanks and delivery systems for nearly 30 years. The latest collaboration is occurring at the intersection of 75th Street and Hwy 2 for the **Whitehead Oil Company**. A new U-Stop Convenience Shop is currently being built by **Hampton Construction**. General Excavating, along with MPE are busy installing tanks, piping, pumps, monitoring equipment and all the associated work on the Whitehead Oil Company Project. "It's a good team. MPE is good at what they do, and we have been fortunate to work with a client like Whitehead Oil... where quality, safety, and clear expectations are the norm," stated project manager Ken Imig of General Excavating. The partnership between General Excavating and Midwest Petroleum Equipment has helped convenience stations, truck stops, and other fuel systems across the region with their new construction or expansion and renovation plans. For more information, contact Ken Imig at kimig@generalexexcavating.com or call (402) 467-1627.



"It's a good team. MPE is good at what they do, and we have been fortunate to work with a client like Whitehead Oil... where quality, safety, and clear expectations are the norm."

—Ken Imig
Project Manager,
General Excavating



DID YOU KNOW

General Excavating installs excavation shoring. Some of the benefits include:

- Up to 30%-40% savings over traditional shoring methods.
- Less vibration and little to no ground disturbance.

For more information call
Brian Egr at (402) 467-1627.



GE
LANDSCAPE
SUPPLY

GE General
Excavating



GE Selfie

An opportunity for General Excavating's employees to show others the work they perform.

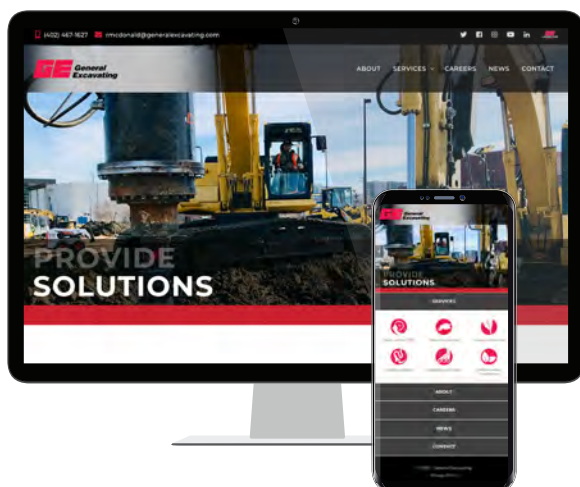
JOHN KREMLACEK submitted this GE "selfie" of work associated with the installation of a fire line and domestic service for **Vision Mechanical** at the University of Nebraska-Lincoln. John, a project foreman at General Excavating for over 13-years, utilized a GE directional boring crew on this improvement project for Architecture Hall. John works on a wide variety of hourly service and contract projects throughout the area.



6701 Cornhusker Highway
Lincoln, NE 68507

PRSRT STD
U.S. Postage
PAID
Permit #
Lincoln, NE

MAKEOVER IN PROGRESS



GENERAL EXCAVATING has been involved in many redevelopment projects. This time, we will be the client as our website undergoes some rehab and renovation. The finished product will make it easier for visitors to review project expertise, scope of services offered, review latest news, and contact the team at General Excavating. Until then, follow us for updates at:

