

ON TRACK

FALL 2017

IN THIS ISSUE

GE Milestones	1
Tight Spaces	2
Featured Project	2
GE Pipeline News	3
Diversification	3
Commitment to Safety	3
Above & Beyond	4
GE Selfie	4



"ON AUGUST 21ST, 2017 the first total solar eclipse visible from Nebraska in over 60 years and for General Excavating 2017 signifies our 30th year serving as Your "Underground" Partner. Since 1987, General Excavating has been dedicated to providing the highest standard of quality services to the construction and environmental industry. Through our commitment to safety and integrity, we have worked each day to provide our clients with high quality work. Every day we look to improve our process from preconstruction to project closeout. In the end, we all want to work with people we can trust to get the job done. General Excavating prides itself on holding that confidence. We would like to thank all of our clients, industry friends, vendors, suppliers and especially our employees for their efforts and talents these past 30-years. We look forward to the next 30."

—Scott Fitzgerald & Joe D'Amico



WIDE OPEN PLACES or TIGHT SPACES

IT'S TRUE, we love installing utilities in a wide open field with the sun shining down on our hard hats and no underground encumbrances in sight. But, more often than not, we find ourselves in a tight alley, a congested street right of way, or in the interior of a building under construction. If only that were the end of the challenges but for good measure add fiber in the way, deep existing utilities for connections, traffic, and all the peculiarities of congested work sites,

and you have the conditions for the work we do best. Recent examples include:

- Site utilities for a 250,000+ sq. ft. research facility on a site the approximate size of a city block on an existing medical campus.
- Interior digging on a new sporting goods store with limited overhead clearances.
- Directional boring new conduit at one of the busiest intersections in Lincoln.

- Site utilities on UNL's busy city campus on a large new building project.
- Excavation of contaminated soil at an operating industrial facility.

Anybody in construction knows that "stuff" can and does happen. The key to our success is working with like-minded general contractors, subcontractors, owners and engineers who want the "unknown" discovered and worked around in a safe, professional manner.

Your "UNDERGROUND" Partner FEATURED PROJECT:

GENERAL EXCAVATING went to Seward, Nebraska as part of **Commonwealth Electric's** power line improvement project designed by **Olsson Associates**. Over 5000-feet of power cable was bored on this project. Hydro Excavation was used to locate existing underground utilities and state of the art GPS technology was utilized to map the new power line route. The GPS coordinates will help the **City of Seward** accurately locate the new line when future splicing, relocation, or associated work is needed.



MILESTONES



1978

Lowry Engstrom, a senior GE project manager, begins his career in the construction business.

1987

General Excavating is incorporated and constructs portions of the MOPAC Trail in Lincoln.

1995

General Excavating moves to its present location at 6701 Cornhusker Highway in Lincoln, NE.

1996

General Excavating wins first excellence in construction award for Sprint Fiber Cable Placement Project.

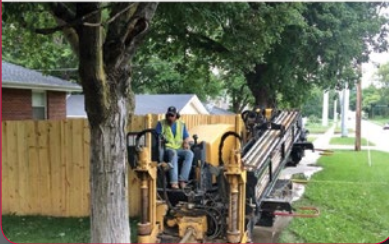
General Excavating is at City of Lincoln.
August 1 · Lincoln · 📍

At General Excavating, we're more than just pipes. Check out this grinder station we're working on for Department of Corrections as part of a larger utilities project designed by Olsson Associates .
#Construction #YOURUNDERGROUNDPARTNER



General Excavating is in Lincoln, Nebraska, USA.
August 9 · 📍

Construction... it really is hard work. GE directional boring crew installing conduit for Lincoln Electric System (LES). #30yearsGE



General Excavating
September 11 at 2:44 PM · 📍

WORK HARD, PLAY HARD, and look at that swing! What better way to celebrate our great employees than with a round of golf at our recent Employee Appreciation Golf Outing.



DIVERSIFICATION

Remains Our Focus

YOU READ THE TITLE and you think a list of General Excavating's underground construction services is in order. It's true, our diversified construction capabilities are important but the real key to General Excavating's growth over the past 30-years is our approach to the diverse components that help a business grow and thrive. Since the beginning, an emphasis has been put on cultivating a **PROFESSIONAL** atmosphere where high standards and integrity are paramount. Translation, we work to provide accurate costs of what it takes to build the job and work through conflicts with a win for all sides as the goal. In order to do this, General Excavating has been blessed over the years with **COMMITTED EMPLOYEES** who approach the work as if they were doing it for themselves. Education and safety training is a continual process as is the time spent to understand our clients' needs. To be in business for 30-years, **CLIENT SATISFACTION** is always at the forefront of our efforts. Repeat work, select list, negotiated projects, a "this is tough work, let's call GE" client base are all markers of the type of customers we strive to assist. Woven throughout the day to day activities of our work is the knowledge that the **COMMUNITY** is the foundation of what we are trying to accomplish. If the community flourishes, we all have a better opportunity to flourish. These 4 simple and diverse elements have been our focus for the past 30-years and will remain the target for the next 30.



Commitment to SAFETY

TRAINING JOBSITE HOUSEKEEPING DOT TRAINING
PPE AND JOBSITE SAFETY FLAGGER TRAINING HEAT STRESS PREVENTION
OSHA HAZWOPER BACK SAFETY AND PROPER LIFTING
TRENCING & SHORING SAFETY RIGGING & SLING SAFETY
SAFE DIGGING & UNDERGROUND UTILITIES



OUR FIELD CREWS KNOW what it takes to complete a project safely and ensure client satisfaction. The quality of their work and safety of coworkers are possible only through an ongoing commitment to education and training. A recent employee appreciation/safety awareness breakfast meeting is a perfect time to reinforce best practices. The list above represents a "partial" list of topics covered each year at General Excavating and a primary reason why we have remained **YOUR "UNDERGROUND" PARTNER** for 30-years.

2001

WorldCom fiber is relocated as part of a State of NE roadway improvement project. General Excavating wins an award for the work.

2003

General Excavating wins a **NATIONAL** excellence in construction award for the Lincoln Electric System SVGS project.

2005

The NDOR "big dig" remediation project wins an environmental excellence in construction award.

2009

General Excavating completes work to improve the hydraulic performance of Stevens Creek in Lincoln for the LPS NRD.



Above & BEYOND

"Ken was very approachable and was able to respond to all questions/comments regarding the project scope, schedule, and budget in a timely fashion. The guys onsite were great to work with and **We would not hesitate to use General Excavating again in the future.**

Keep up the great work!"

Neil Bukouricz,
Project Geologist- Stantec

General Excavating working for Stantec on an environmental remediation project in Lincoln, NE.



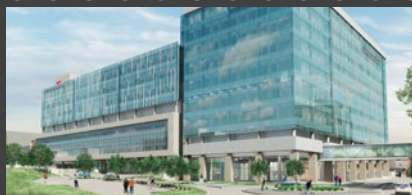
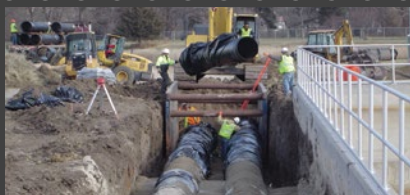
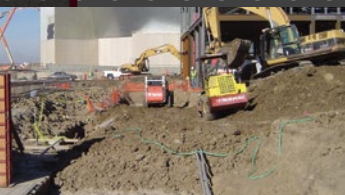
GE Selfie

An opportunity for General Excavating's employees to show others the work they perform.

CJ LIND submitted this GE "selfie" of concrete work associated with the installation of a City of Lincoln water main project. CJ, a project foreman, has been with General Excavating for over four years and completes a wide range of water, sanitary sewer, and storm sewer projects for public and private owners.

PRSRT STD
U.S. Postage
PAID
Permit #
Lincoln, NE

GE General Excavating
6701 Cornhusker Highway
Lincoln, NE 68507



2012

Construction of DEC CUP hydronic piping to support Pinnacle Bank Arena in Lincoln's Haymarket.

2014

Construction of Nebraska Innovation Campus Centralized Renewable Energy System Project.

2016

General Excavating helps construct the Fred and Pamela Buffett Cancer Center at UNMC in Omaha.

2017

A Total Solar Eclipse and General Excavating looks forward to solving "underground" construction problems for another 30-years.